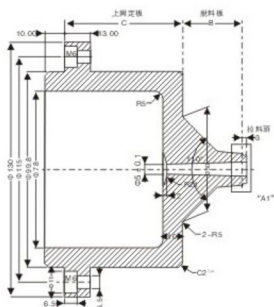


## 小水口標準特殊注口襯套(Φ100)

Small water spigot standard special sprue bushing(Φ100)

JH028-1



說明Denote:

一、適用成型機規格: 90T~450T噴嘴機械孔(Φ100)

二、適用於小水口標準模胚系列

三、優點介紹:

- 1).定位環與灌嘴保證同心, 射出噴嘴決不漏料;
- 2).有效減短料頭長度, 降低廢料成本, 且利于成型;
- 3).採用標準化設計製造, 交貨迅速, 經濟實用;
- 4).使用材質: 鉻鋼;
- 5).可依模具實際規格及特殊要求量身定做。

四、標準規格及價目對照表: (右表所示)

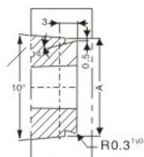
一、Apply to machine's specification:90T~450T(Φ100)

二、Apply to small water spigot standard mold embryo.

三、Merit:

- 1). Locating ring and sprue bushing concentric, do not leak material when ejecting.
- 2). Can reduce material head's length and reduce cost efficacious, and be propitious to molding.
- 3). Adopt standard design manufacture, delivery ontime, economic and with practicability.
- 4). Material: Nobelium steel.
- 5). Special product is available per the mold's specification.

四、Standard specification and price list: (as list on right)



	A	B	C	單價
GS系列	Φ12	20	30	850
			35	880
		25	45	910
			30	850
		30	35	880
			45	910
GS系列	Φ16	25	30	850
			35	880
		30	45	930
			50	960
		35	35	900
			45	930
GS系列	Φ20	30	35	900
			45	930
		35	50	960
			60	1010
		40	45	950
			50	980