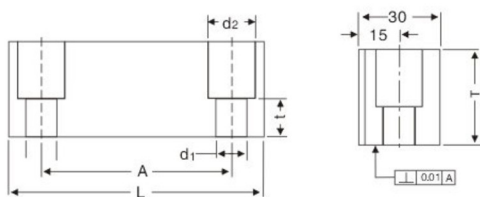
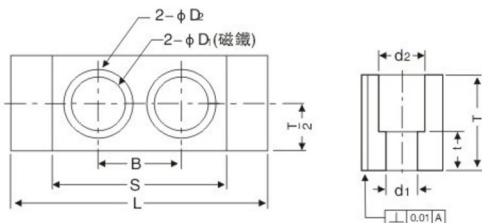


磁力鎖模扣MLK LATCH LOCK

鎖模組件系列
Mold locking components series



底座



方鐵

與其他鎖模扣相比，更易于安裝。基本不需要在合模時減速。從而縮短了成形周期。

Comparing with other mode locking buckle, it is much easier to install. Deceleration is basically not needed during die assembly so that it shortens shaping cycle.

Type	拉力(kgf) 20°C	A	L	T	t	d1	d2	單價 ¥ Unit price
MLK-40	40kgf	63	80	25	12	9	14	350.00
MLK-80	80kgf							400.00
MLK-100	100kgf	100	126	40	15	11	18	420.00
MLK-200	200kgf							480.00



Order: Type No. x Pcs
MLK-40 x 10

Example 使用例

