

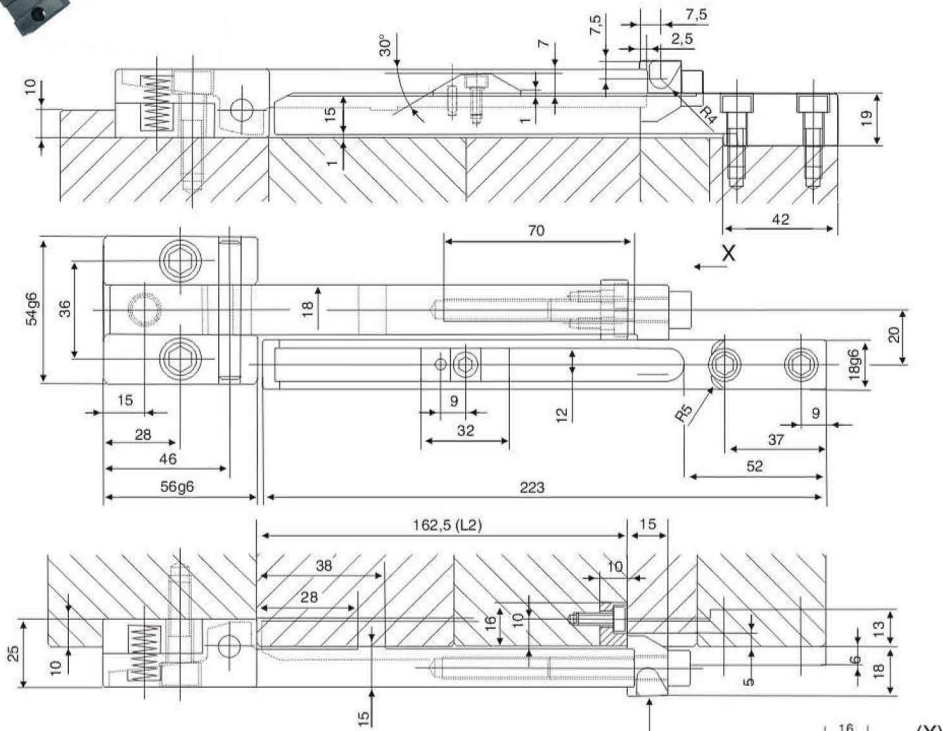
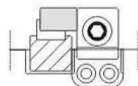
鎖模扣 Z 5-32

LATCH LOCK



特點：彈簧設計安全可靠，產品分左右可在模具加工安裝中更簡單，在模板上至少要2套并對稱安裝。

Characteristics: Spring design is safe and reliable. Left and right are separated for the product so that die processing and installation become much simpler. There shall be at least 2 sets on template.



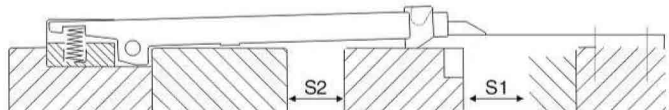
L2=162.5	F2=~30N
L2=110.5	F2=~48N

max.180°C

Type	單價 ¥ Unit price
Z 5-32	

Order: Type No. x Pcs
Z5-32 x 10

Example
使用例



鎖模組件系列