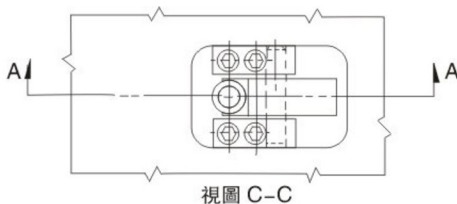
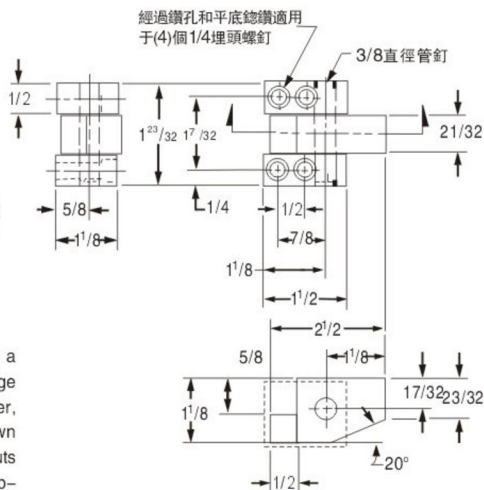


# 加速頂出 AED ACCELERATED EJECTOR

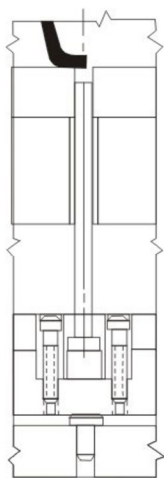


加速頂棍設計簡單，採用樞軸型動作進行加速頂出機械效益1:1，他們適應高達3/8”直徑的頂針，（頂部直徑超過5/8”的頂針可以打磨進行區配）簡單的設計允許加速頂棍可以插入推板中，（如下圖所示）或在頂端安裝，但依據頂出活動所獲得的空間而定。

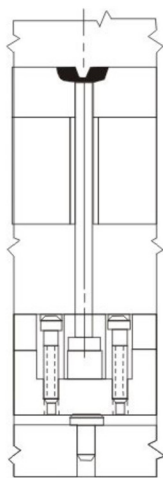
The DME Accelerated knock-Outs are simple in design, using a pivot-type motion for accelerated ejection... mechanical advantage is 1:1. They will accommodate ejector pins up to 3/8" in diameter, (pin with head diameters greater than 5/8" can be ground down to fit.) Simplicity of design permits DME Accelerated knock-Outs either to be inserted into the ejector plate (as shown below) or top-mounted, depending on space available for the ejection movement.



## 标准应用情况 Typical applications



剖面面B-B  
應用情况1



剖面面B-B  
應用情况2

